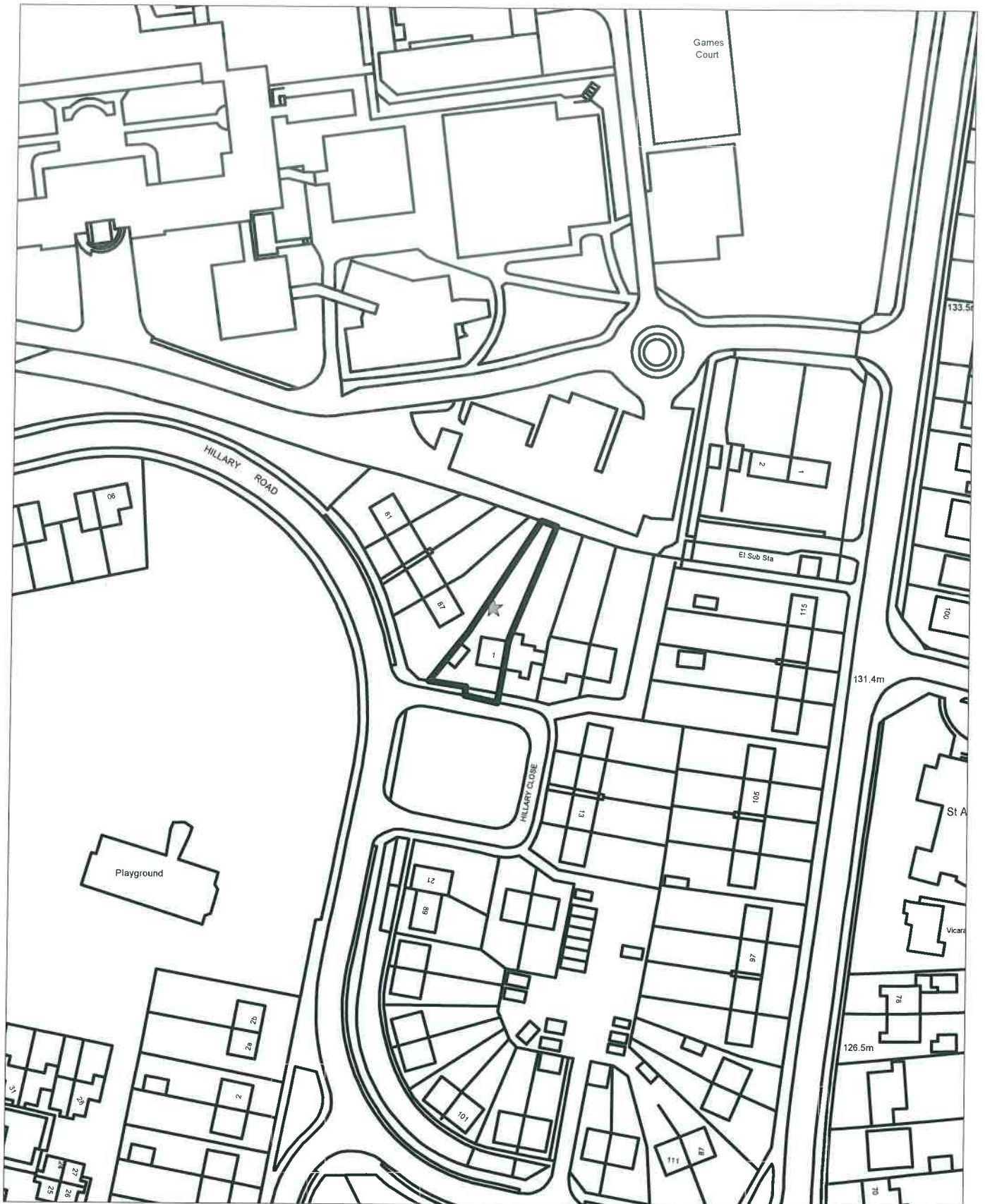
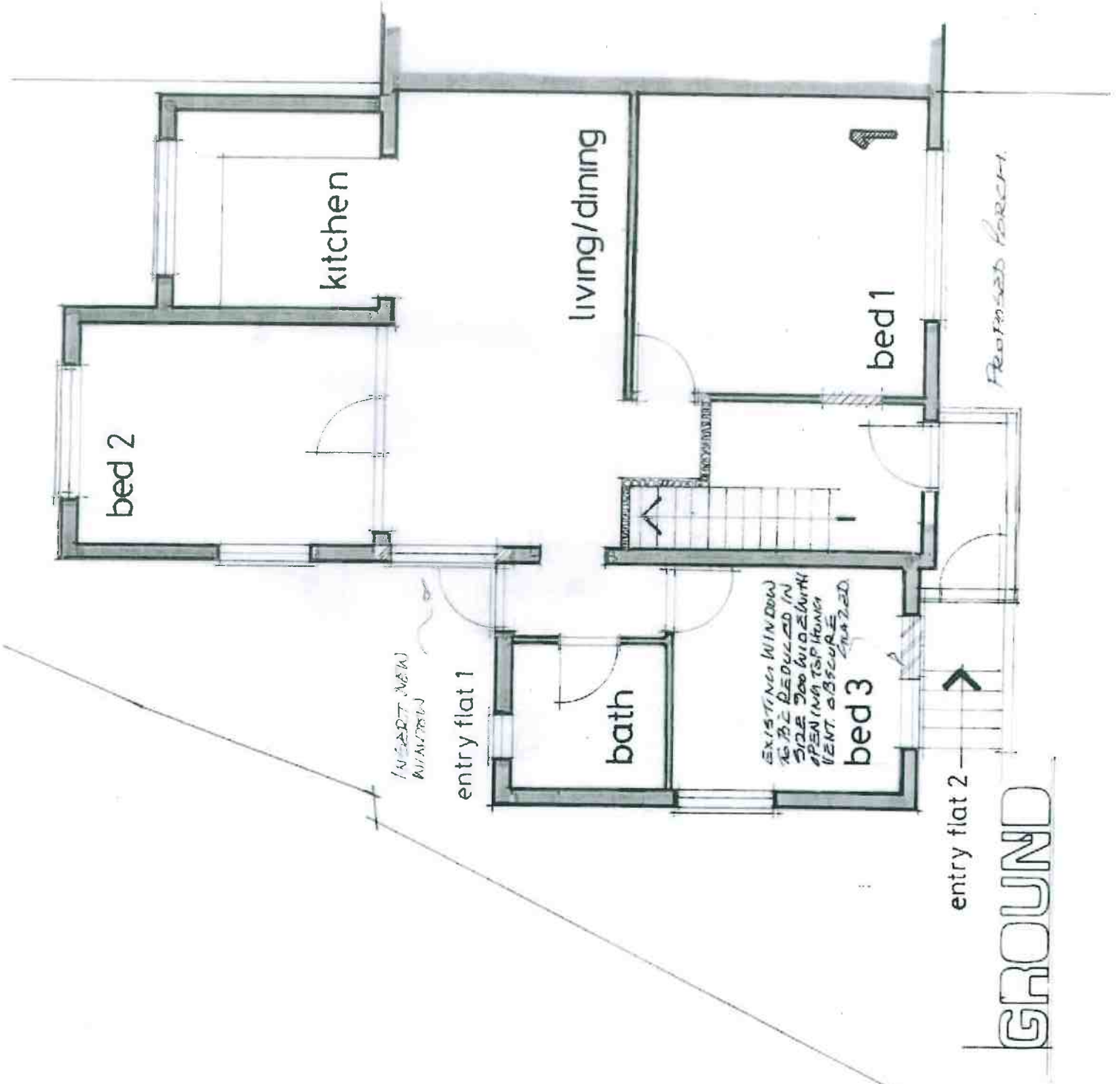


18/05741/FUL
Scale 1/1250





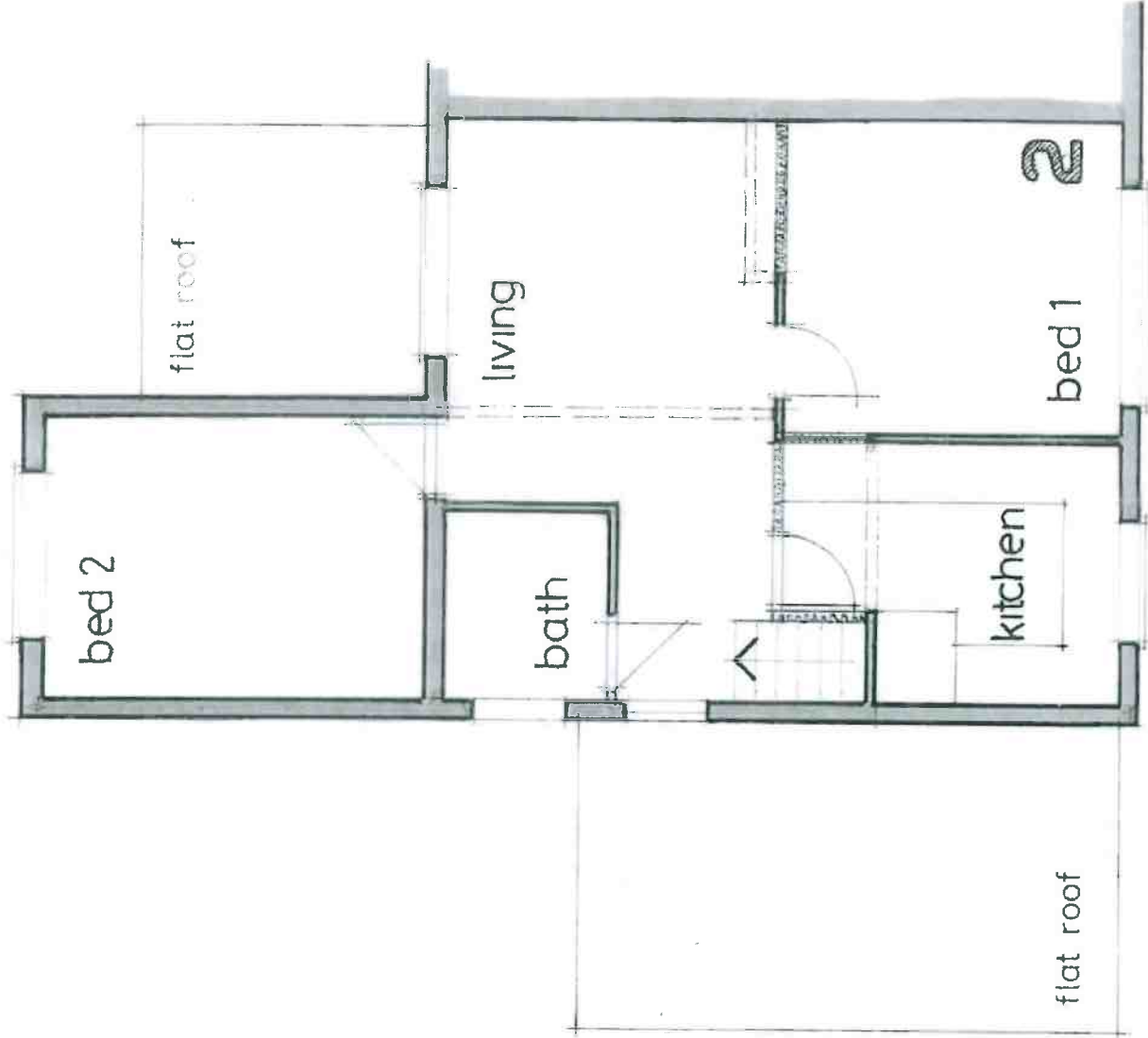
Ref: 18/CS/1647/F/1
AMENDED

PLANNING
 5 APR 2018
 WYCOMBE DISTRICT



scale 1:50 paper a3

Revisions	
Client	MR AEF
Project	1 HULLY CLOSE 174 WYCOMBE
Drawing	GROUND FLOOR Flat 1
Tim Isaac, 66 ARCHWAY AVE, Architectural Design Services 80 Fairway Road, Taplow, Maidenhead, Berkshire, SL6 0NU Tel: 01628 025971	
Drawn	Tim Isaac Date 11/12/17
Scale	1:50
Drawing Number	1185/01 C



Autodesk AutoCAD 2014
AMENDED

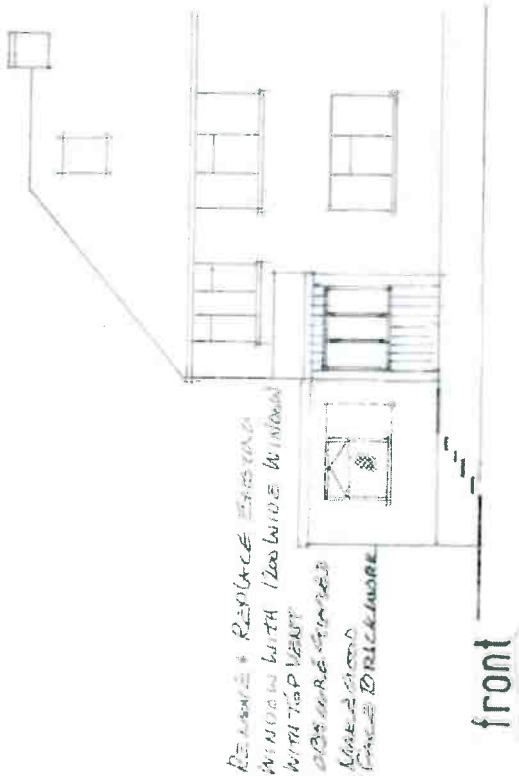


scale 1:50 paper a3

Requires	
Client	me SELF
Project	1 HILLARY COOSE HILLARY WYCOMBE
Drawing	FIRST FLOOR FLAT 2.
TIM ISAAC, ARCHITECT, AIA, Architectural Design Services 40 Perrins Road, Taplow, Maidenhead, Berkshire, SL6 6SL, Tel: 01628 860971	
Drawn	A. Isaacs Date: Nov 7 2017
Scale	1:50
Permit Number	1185/02 B

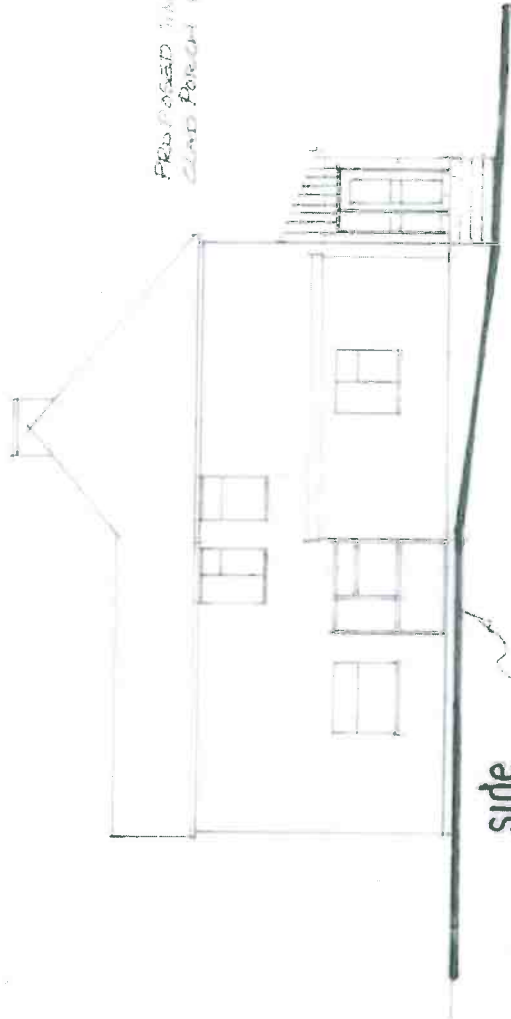
PLANNING
 5 AUG 2019
 WYCOMBE DISTRICT

FIRST FLOOR



REMOVE & REPLACE EXISTING WINDOW WITH 1200 WIDE WINDOW WITH TOP VENT
DOOR TO BE SET IN RED BRICKWORK

front



side

REPLACE NEW WINDOWS



rear

side
Prof. (S. G. SULLIVAN)
AMENDED

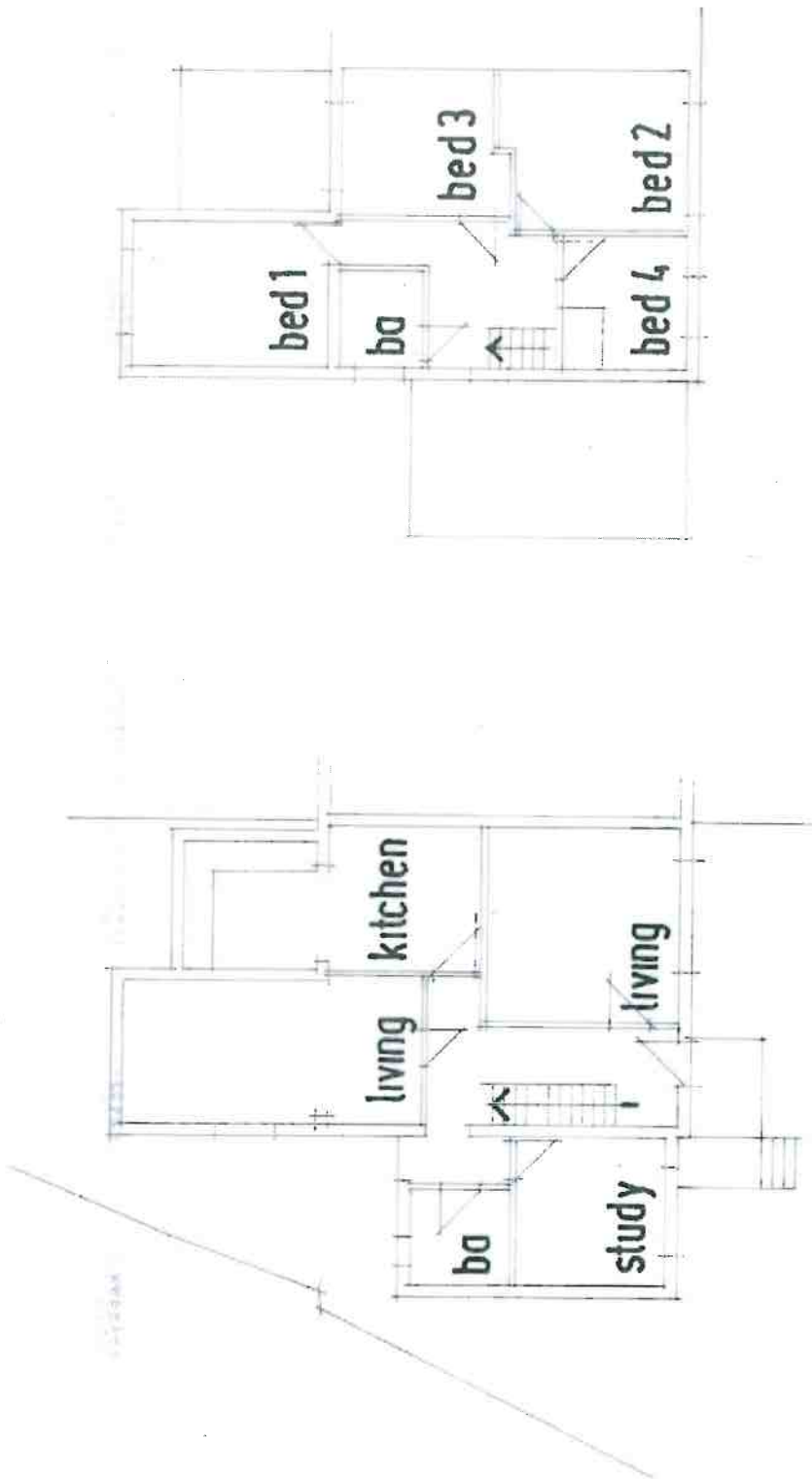
21.1.11.11
ROOF WINDOWS ADDED

PROPOSED TERRACE
CLIMB PORCH & STAIRS

0 1 2 3 4 5
scale 1:100 paper a3
PLANNING
WYCOMBE DISTRICT

Revisions	
Client	MR SEIF
Project	1 HILDAY CLOSE HWA-WYCOMBE
Drawing	ELEVATION
TIM ISAAC (INCORPORATED) Architectural Design Services 80 Fairview Road, Tipton, Middlesbrough, Cleveland, TS16 9JH Telephone: 01642 662871	
Drawn	H. Isaac Date
Scale	1:100
Drawing Number	1185/03 D

ELEVATIONS

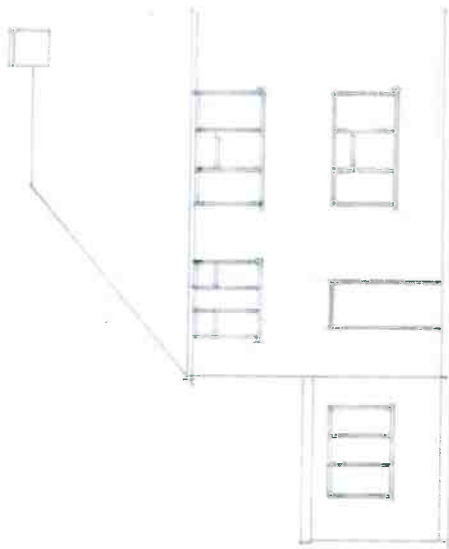


Ref: 15/10559/2000/2
AMENDED

0 1 2 3 4 5
 scale 1:100 paper a3
 PLANNING
 5.6.19.2015
 WYCOMBE DISTRICT

Revision	
Client	MR DELIF
Project	1 HILARY CLOSE HIGH WYCOMBE
Drawing	EXISTING FLOOR PLANS
Tim Isaac Architectural Design Services 80 Fairview Road, Taplow, Maidenhead, Berkshire SL6 0NU (Tel: 034528 60571)	Date
Scale	1:100
Drawing Number	1185 / 04
Revision	

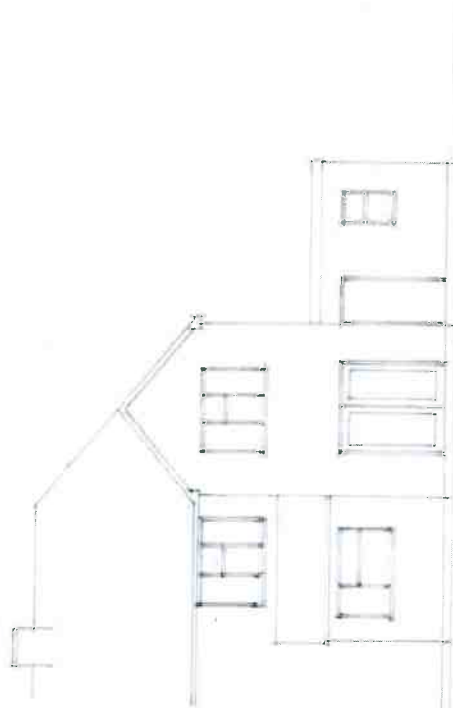
EXISTING FLOOR PLANS



front



side



rear

FILED IN CELL FOR
AMENDED

0 1 2 3 4 5
scale 1/100 paper a3

PLANNING
7 AUG 2014
WYCOMBE DISTRICT

Revisions	
Client	MR ASHF
Project	1 HILARY CLOSE HIGH WYCOMBE
Drawing	EXISTING ELEVATIONS
TIM ISAAC (INC) ARCHITECTS Architectural Design Services 80 Fairview Road, Taplow, Maidenhead Berkshire SL6 6NG TEL: 01628 665071	
Drawn	Tim Isaac
Date	
Scale	1:100
Drawing Number	1185 / 05
Revision	

ELEVATIONS EXISTING

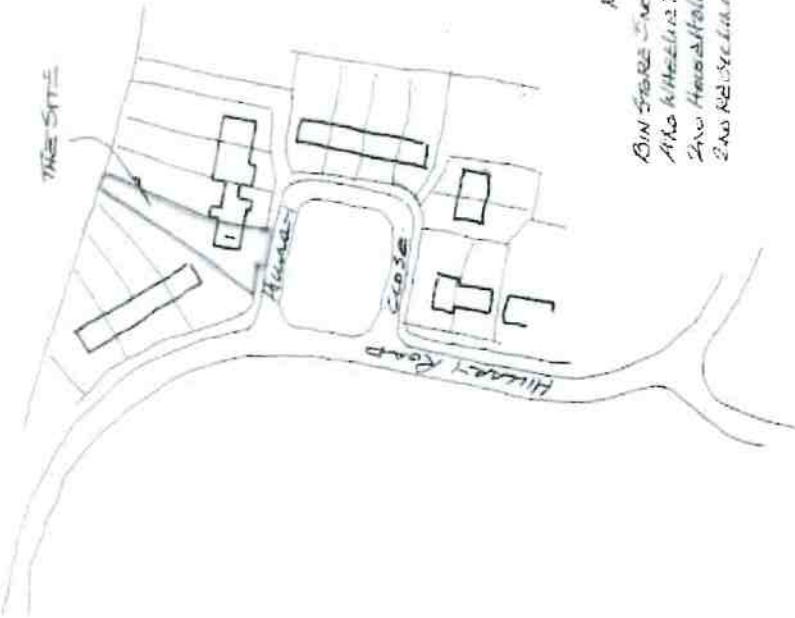
ENTRANCE FRAMES TO BULLYAN

AMENITY AREA
EAST 2

AMENITY AREA
EAST 1

N

THE SITE



MIN 1.0M FOOTPATH.
 BIN STORE ENCLOSURE
 TWO KITCHEN TRUCKS
 TWO HEADS-UP RUBBISH
 TWO RECYCLING

location plan 1.1250

site plan 1.200

PLANNING
 8 AUG 2019
 WYCOMBE DISTRICT

PARKING 4 CARS.
 SPACES 1 & 2 EXIST
 SPACES 3 & 4 PROPOSED
 BRICK PARTNER TO MATCH.
 SPACES 2 & 3 5.0M.

Ref: 18 / CS / 15 / 100 / 1
 AMENDED

REV A MAY 2015
 RED LINE TO LOCATION PLAN
 REVISED.

1	0	1	2	3

scale 1:50 paper a3

Revisions	
Client	MR SELF
Project	1 HILARY CLOSE HIGH WYCOMBE
Drawing	LOCATION & SITE PLANS
Drawn	Tim Isaac
Date	1:1250 1:200
Scale	
Drawing Number	1185/06 F

Tim Isaac (INC) ARCH. REG. IAT. ATP
 Architectural Design Services
 80 Fairford Road, Taplow, Maidenhead,
 Berkshire, SL6 0ND Tel: 01235 922771



REF: 18 / 05741 / R

ADDITIONAL PLANS

PLANNING
29 JUL 2019
WYCOMBE DISTRICT

WDC 1



Biocidal Products
Regulation EU 528/2012
Wolmanit® CX treated wood is a treated article that incorporates biocidal products: copper hydroxide carbonate/II and boric acid. They protect wood against fungal decay/rot and insect attack.
Keep away from food, drink and animal feeding stuffs. Avoid breathing dust when cutting treated wood.

Before assembly

- We recommend that time is taken to read the instructions before starting assembly, then follow the easy step by step guide. The instruction sheet is only a guide to the assembly. Certain items may not be shown to scale.
- Check all components prior to assembly
- Drill all components where indicated.
- This product should be assembled by no less than two people.
- Never attempt to erect the assembly in high winds.



Recommended tools for assembly

- Cross head screw driver
- Drill with 3mm diameter drill bit
- 13mm Spanner

No.	Components	Qty.
1	Base plates	4
2	Side panel	2
3	Centre panel	1
4	Back panel	2
5	Door	2
6	Left lid	1
7	Right lid	1
8	Front rail	2
9	Lid stay	2

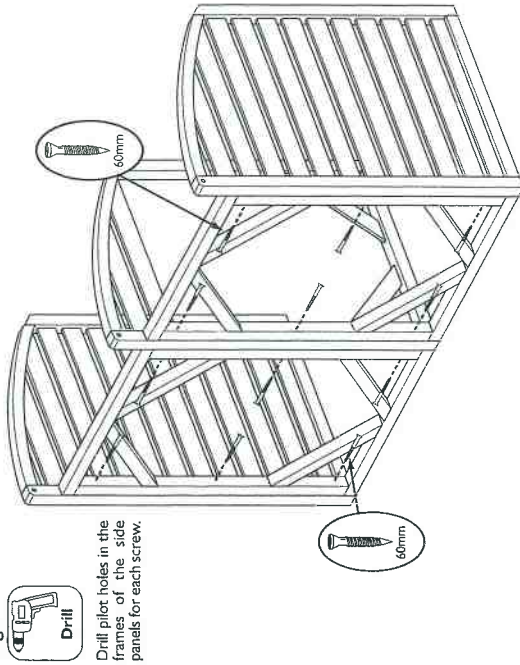
No.	Fixing kit	Qty.
10	Hinges	4
11	Slide bolt	2
12	150mm bolt	1
13	100mm bolt	2
14	Nuts	3
15	Washers	3
16	Chain	4
17	60mm screws	12
18	40mm screws	16
19	30mm screws	36
20	15mm screws	4

English SS205B

ADDITIONAL PLANS

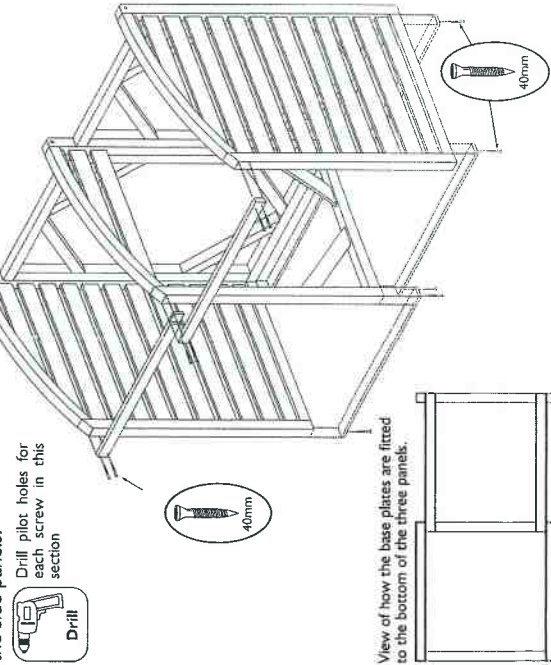
1. Side, centre and back panels

Secure the two side panels, centre panel and two back panels as shown below using 3 x 60mm screws for each join. Ensure all panels are level along the bottom edge.



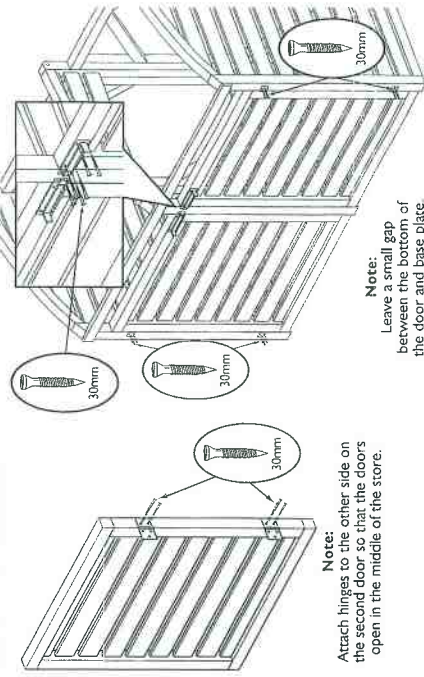
2. Front rails and base plates

Secure the two front rails to the top of the front face of the uprights as shown using 6x40mm screws. Attach the four base plates using 2 x 40mm screws per plate. When attaching the plates, ensure that the end of each plate is flush with the side panels.



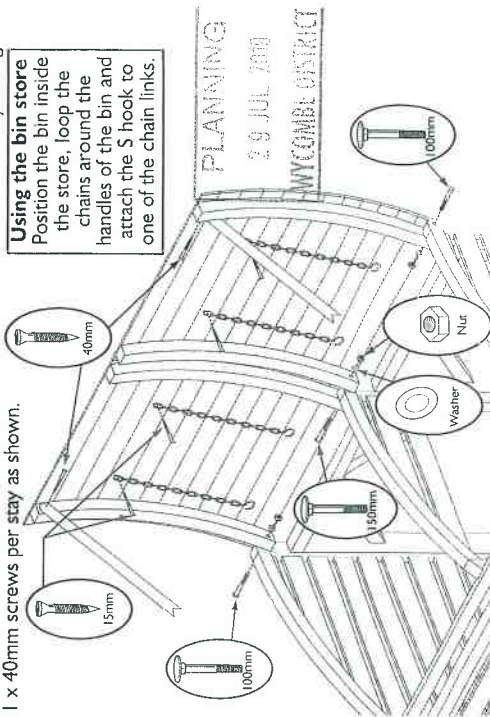
4. Door

Attach the hinges to the frames of the doors as shown below using 3x30mm screws per hinge. Position the doors between the side panels leaving a small gap between the bottom of the door and the base plate. Secure the hinges to the outer side panels using 3x30mm screws per hinge. For each door position the two parts of the slide bolt as shown below and secure using 6x30mm screws for each bolt set.



4. Lid

Position the lids between the side panels as shown. Align the pre-drilled bolt holes and insert a bolt. Secure each bolt with a washer and a nut. Do not over tighten the nuts. Attach two chains to the inside of each lid using 1 x 15 mm screw per chain. Position the chains so that they can be looped round the handles of the bin and hooked back on the chain. Attach the lid stays using 1 x 40mm screws per stay as shown.



We constantly improve the quality of our products, occasionally the components may differ from the components shown and are only correct at time of printing. We reserve the right to change the specification of our products without prior notice.



REF: ...18... / 05741... / FU-...

ADDITIONAL PLANS

WDC 2

PLANNING
29 JUL 2019
WYCOMBE DISTRICT

Overlap Wallstore Pressure Treated English SS311C

Assembly Instructions



2.9 JUL 2010

WYCOMBE DISTRICT

Before assembly

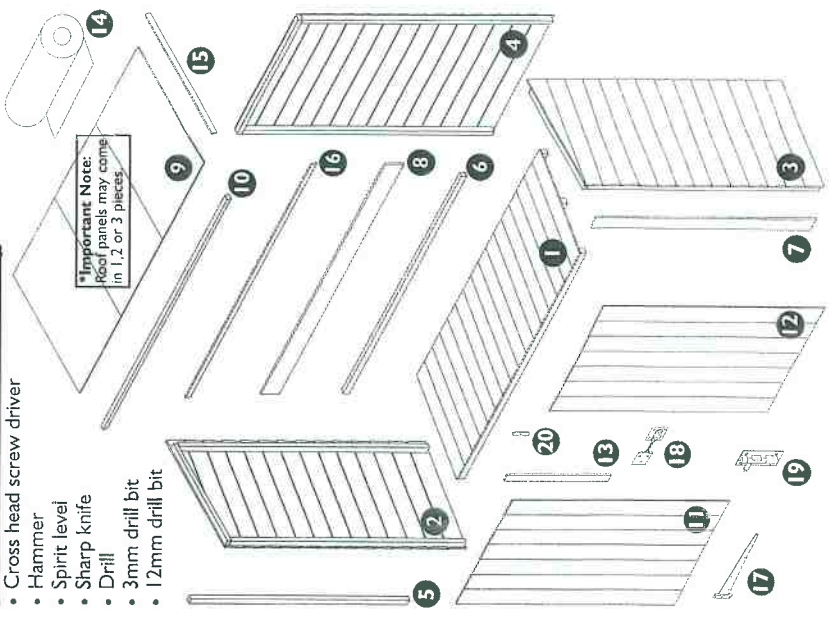
- We recommend that time is taken to read the instructions before starting assembly, then follow the easy step by step guide. The instruction sheet is only a guide to the assembly.
- Certain items may not be shown to scale.
- Check all components prior to assembly
- This product should be assembled by no less than two people
- Drill all components where indicated



Recommended tools for assembly

- Cross head screw driver
- Hammer
- Spirit level
- Sharp knife
- Drill
- 3mm drill bit
- 12mm drill bit

***Important Note:**
Roof panels may come in 1, 2 or 3 pieces

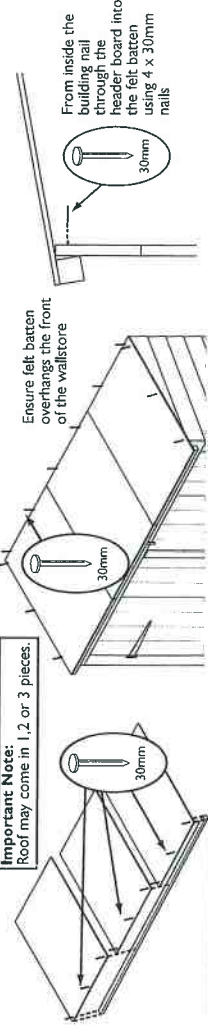


No.	Components	Qty.
1	Floor	1
2	Left side panel	1
3	Right side panel	1
4	Back panel	2
5	Door frame uprights (29x45x1345mm)	2
6	Door header rail (29x35x1690mm)	1
7	Front panel coverstrip (92x12x1365mm)	2
8	Door header board (110x12x1795mm)	1
9	Roof panel (this part may come in 1, 2 or 3 pieces)	3
10	Felt batten (29 x 29 x 1795mm)	1
11	Left-hand door	1
12	Right-hand door	1
13	Door weatherstrip (40 x 12 x 660mm)	2
14	Roofing felt (2m)	1
15	Side bargeboard (40x12x830mm)	2
16	Front bargeboard (40x12x1830mm)	1

No.	Fixing kit	Qty.
17	T-hinges	4
18	Hasp and staple	1
19	Tower bolts	2
20	Turn button	1
21	50mm screws	17
22	25mm screws	47
23	20mm screws	7
24	19mm roundhead screws	17
25	30mm nails	48
26	13mm felt nails	30

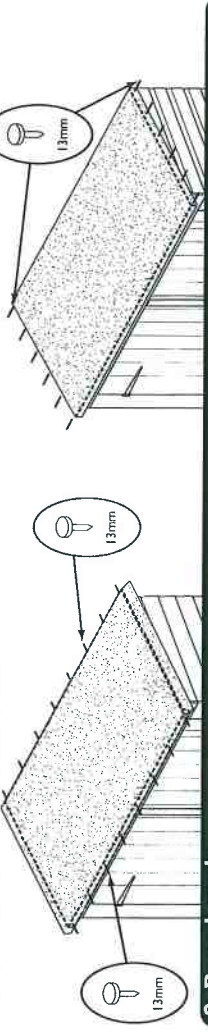
7. Roof

Secure the roof panel(s) to the felt batten using 3 x 30mm nails per panel, ensure the roof panel is flush to the edge of the batten. Position the roof on the assembly and secure down using 12 x 30mm nails. From inside the building nail through the door header panel into the felt batten using 4 x 30mm nails.



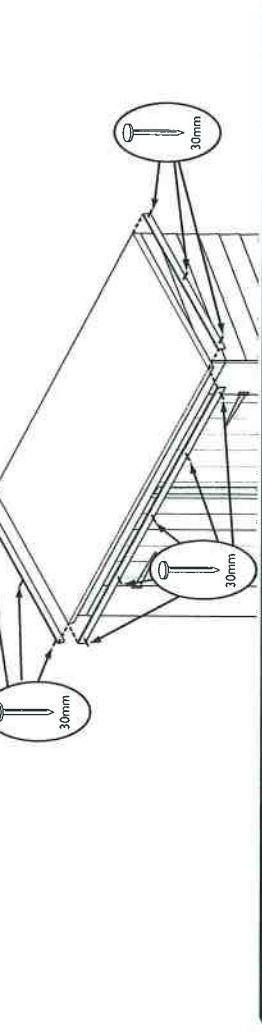
8. Roofing felt

Lay the roofing felt on the roof with an overhang all round. Fold the felt down at the front and secure using 10 x 13mm felt nails to the felt batten. Tension the felt over the roof and fold down at the back and secure to the back panel using 10 x 13mm felt nails. Dress down each end of the felt and secure to the side panels using 6 x 13mm felt nails per end. Once the felt is secure trim of the excess.



9. Bargeboards

Attach a short bargeboard to each side ensure the top and front edges are flush with the roof line and secure each board in place using 3 x 30mm nails. Attach the long bargeboard to the front of the roof make sure it is flush to the roof line use 5 x 30mm nails as shown.



Important information

Pressure treated overlap buildings require no further preservative treatment. However they can be painted or stained if required. Adequate provision must be made to ensure ground contact is avoided and air is able to circulate underneath the building. Placing the building on a concrete pad or slab base is acceptable provided that the building is not allowed to sit in pooled water during wet conditions. If the building is to sit on soil or grass it **MUST** be erected on pressure treated wooden 50mm x 50mm or similar bearers (These are not supplied in the kit). Rowlinson Garden Products recommend using pressure treated bearers with all buildings on any type of base.

Timber Information.
As timber is a natural material, there are certain weather conditions that may affect the materials properties. In times of excessive dry spells the material may lose some of its internal moisture causing a certain degree of shrinkage on a panel and in periods of excessive rain there will be a certain amount of swelling throughout the wooden panels. This process can not be avoided. If you have problems with certain boards shrinking in dry spells try to decrease the amount of direct sunlight on the building or the amount of air passing over the building. During hot spells spray water directly onto the panels with the aid of a garden hose.

If in doubt of any aspect regarding the assembly, use or safety of your building, please contact us:

Help Line: (Normal Office Hours): 01829 261 121

Email: support@rowgar.co.uk

ROWLINSON GARDEN PRODUCTS LIMITED

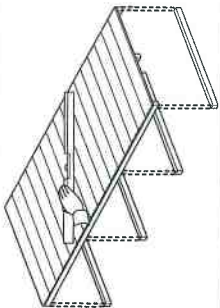
Green Lane
Wardle Nr. Nantwich
Cheshire
CW5 6BN
www.rowgar.co.uk

We constantly improve the quality of our products, occasionally the components may differ from the components shown and are only correct at time of printing. We reserve the right to change the specification of our products without prior notice.

© 2015 Rowlinson Garden Products Ltd

1. Floor section

Prepare a level area for the wallstore to sit and position the floor panel.



Important note

To "VALIDATE" the guarantee, adequate provision must be made to ensure ground contact is avoided and air is able to circulate underneath the building.

Placing the building on a concrete pad or slab base is acceptable provided that the building is not allowed to sit in pooled water during wet conditions.

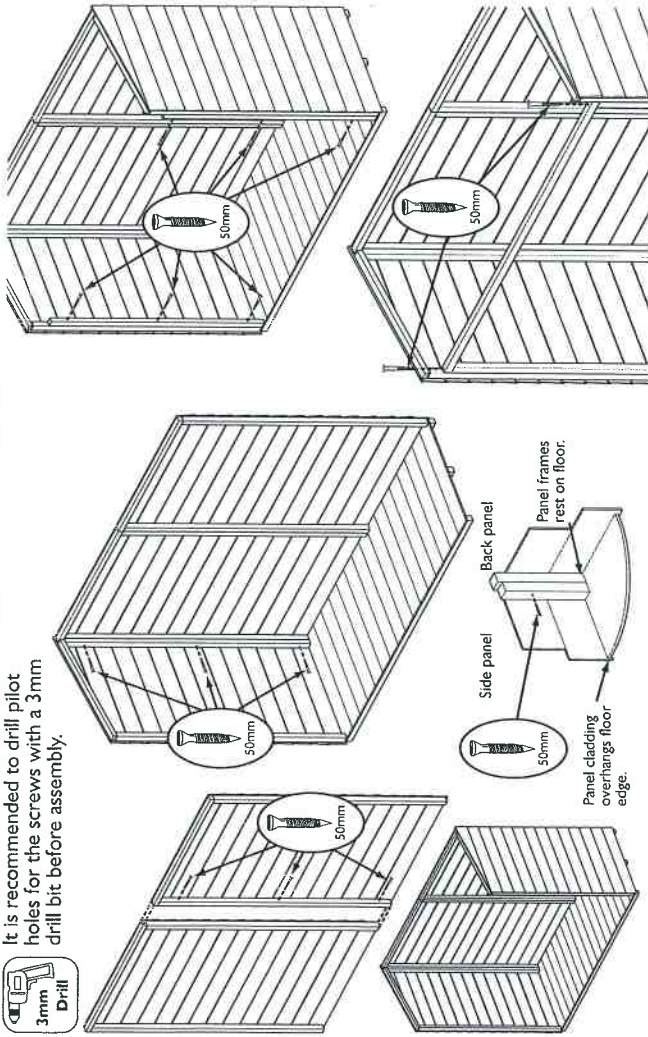
If the building is to sit on soil or grass it **MUST** be erected on pressure treated wooden 50mm x 50mm or similar bearers (**These are not supplied in the kit**).

Rowlinson Garden Products recommend using pressure treated bearers with all buildings on any type of base.

2. Wall panels

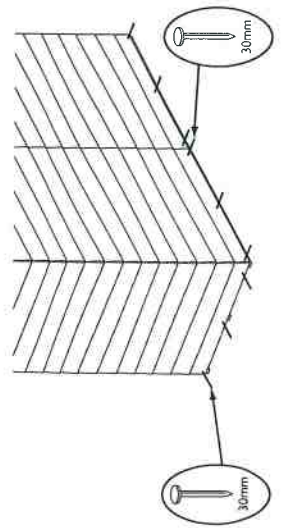
Secure the two back panels together as shown using 3 x 50mm screws. Position the back panel and the left side panel on the floor. Note how the panel frames sit on the floor with the panel cladding overhanging the floor edge. Ensure square and secure using 3 x 50mm screws, screw through the frame of the side panel, into the frame of the back panel. Repeat for other side panel. Secure the door frame uprights to the framing of the side panels as shown using 3 x 50mm screws per upright. Position the door header rail on top of the door frame uprights and secure using 1 x 50mm screw at each end. Screw down through the header rail into the ends of the uprights.

It is recommended to drill pilot holes for the screws with a 3mm drill bit before assembly.



3. Securing the panels to the floor

From the outside of the assembly secure the panels to the floor using 3 x 30mm nails per panel, nail through the panel overhang into the floor.

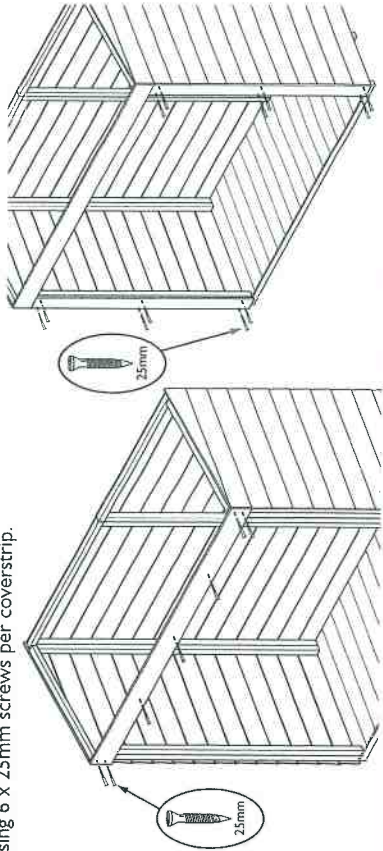


4. Front paneling

Fit the door header board to the front of the assembly, ensure that it is flush to the top of the side panels and secure using 7 x 25mm screws. Attach the front coverstrips underneath the header board and flush to the outer edge of the side panels. Secure using 6 x 25mm screws per coverstrip.

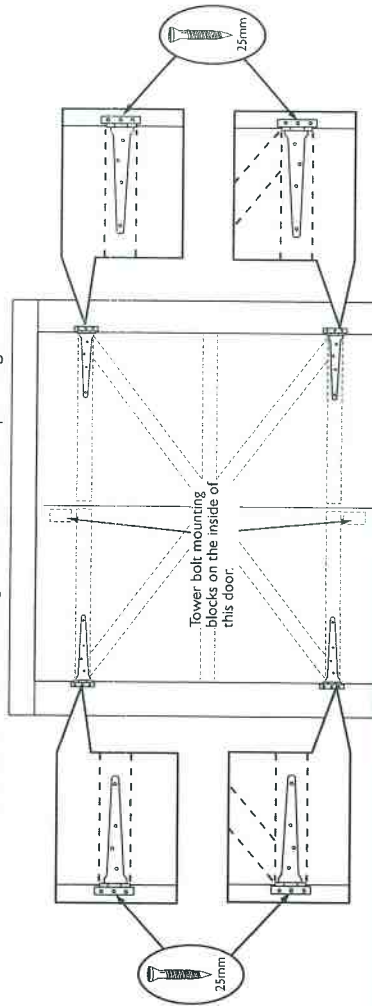


It is recommended to drill pilot holes for the screws with a 3mm drill bit before assembly.



5. Doors

Lay the assembly on its back. Place the doors in the door opening, ensure they are sitting centrally. Note the inside of the left door has the two pre-fitted block for the tower bolts. With the doors in place align the hinges to the door bracing and secure to the door and the front panels using 7 x 25mm screws per hinge.



6. Door fittings

Secure the tower bolts to the mounting blocks using 4 x 19mm roundhead screws per bolt. With the doors shut, position a door coverstrip so it overlaps both doors and is flush at the top of the doors, secure only to right-hand door using 3 x 20mm screws. In the same way fix the other door coverstrip flush to the bottom of the door using 3 x 20mm screws. Fit the hasp and staple between the two coverstrips using 7 x 19mm screws as shown below.

